



The Hartfield, Winterstoke Gate, Apprentice Way, Weston-super-Mare, North Somerset, BS24 7NH



DAVID PLAISTER

PROPERTY AGENTS • SALES & LETTINGS • AUCTIONEERS

# The Hartfield, Winterstoke Gate, Apprentice Way, Weston-super-Mare, North Somerset, BS24 7NH

£294,950

Excellent positioned between the beautiful Mendip Hills and Weston-super-Mare's beach and seafront, Winterstoke Gate is an attractive new development of 425 two, three and four bedroom homes, and one and two bedroom apartments.

Part of the emerging Parklands Village, this leafy, new, tree-lined community offers sophisticated suburban living within a stone's throw of the seaside, and the bustle of the high street. Designed to help you use less energy, Echo by Keepmoat's revolutionary eco-friendly homes combine tomorrow's technology and the latest thinking to bring sustainable living into everyday life. Inside every Keepmoat home you'll find high standards of finish throughout and with a range of optional extras you can move into a new home that truly feels like your own. Keepmoat homes are covered by a 10 year NHBC warranty.

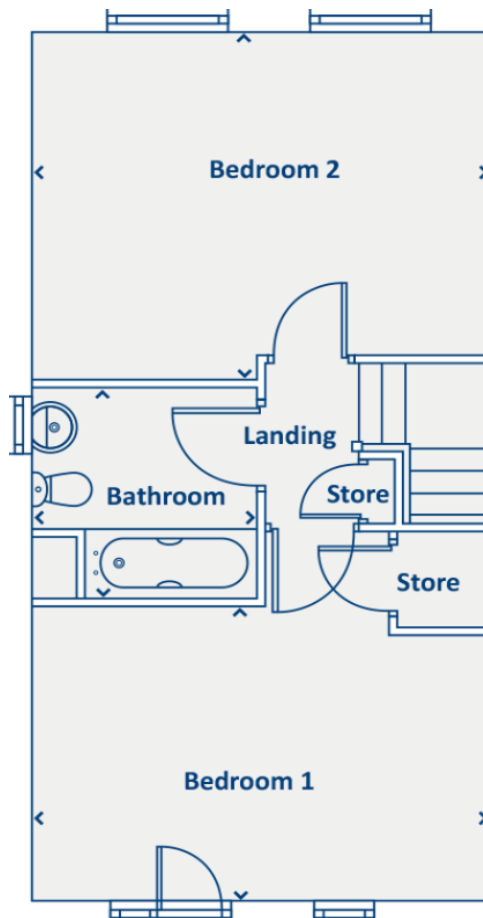
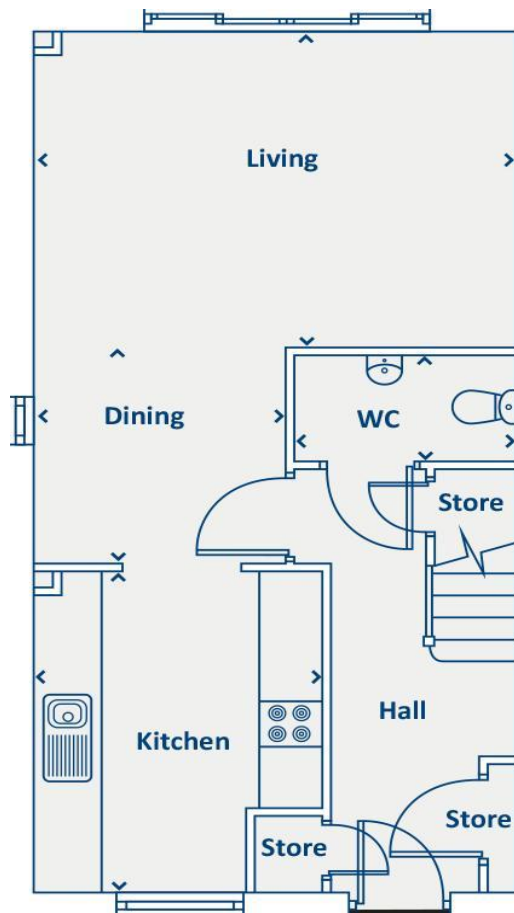
The Hartfield is an immaculate two bedroom, semi-detached, freehold home with new technologies to help you live more efficiently and reduce energy waste. The home comprises a hallway leading into the main living / dining / kitchen area with patio door leading out to the rear and a W/C on the ground floor, two bedrooms and a bathroom on the first floor. The property also comes with parking and includes solar PV panels plus EV charging point.

Parklands Village is ideally situated for the family or commuter, within reach of various schools and Junction 21 which provides access to the M5 and from there to most major towns and cities for the commuter. Worle train station is also close by for those opting for public transport, and a regular bus service is within reach which offers transport to most areas of the town and outlying districts. Viewing this tremendous new development is highly recommended by the agent, please contact us today to find out more about how you can secure your new home at this desirable site!

- The Hartfield is a beautiful two bedroom, semi-detached, freehold home at Winterstoke Gate with 2.7m ceiling height!
- Situated within a tremendous development, only three miles from Weston-super-Mare and the beach
- Smart design and the latest eco-friendly materials for low-cost living
- Built-in electric vehicle charging points, solar panels and waste water heat recovery system
- A leafy, landscaped community with its own green spaces
- Easy access to schools, supermarkets, restaurants and shops







Company Registration No. 08744483 VAT No. 173 8517 84

MONEY LAUNDERING REGULATIONS 2017 intending purchasers will be asked to produce identification and proof of financial status when an offer is received. We would ask for your co-operation in order that there will be no delay in agreeing the sale.

THE PROPERTY MISDESCRIPTIONS ACT 1991 The Agent has not tested any apparatus, equipment, fixtures and fittings or services and so cannot verify that they are in working order or fit for the purpose. A Buyer is advised to obtain verification from their Solicitor or Surveyor. References to the Tenure of a Property are based on information supplied by the Seller. The Agent has not had sight of the title documents. A Buyer is advised to obtain verification from their Solicitor. You are advised to check the availability of this property before travelling any distance to view. We have taken every precaution to ensure that these details are accurate and not misleading. If there is any point which is of particular importance to you, please contact us and we will provide any information you require. This is advisable, particularly if you intend to travel some distance to view the property. The mention of any appliances and services within these details does not imply that they are in full and efficient working order.

# DAVID PLAISTER

PROPERTY AGENTS • SALES & LETTINGS • AUCTIONEERS

12 South Parade, Weston-super-Mare,  
North Somerset, BS23 1JN

01934 815 053 info@davidplaister.co.uk

www.davidplaister.co.uk